

**Map 1**  
**Key**  
 Green is greenbelt and recreation space  
 Brown is industry and commerce incl retail  
 Blue is housing of all types  
 Solid Colours show areas where more than 50 percent voted for that type of development  
 Hatched areas didn't receive a 50% approval for any one type of development. The colours reflect the most popular choices  
 Predominantly green space, though 1 area was identified as industrial

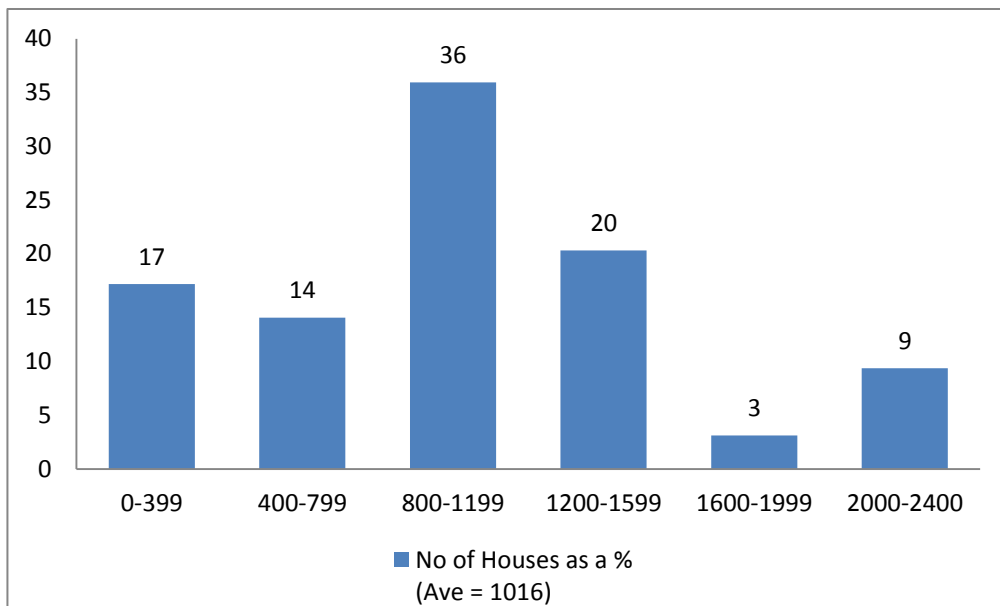
**Map 2**  
 Shows the top five sites for housing development in blue. NB none of the areas received the support of 50 percent of the voter population

**Map 3**  
 Shows the top 5 sites for recreational development in green. Site 9 was the only site supported by over 50 percent of the population

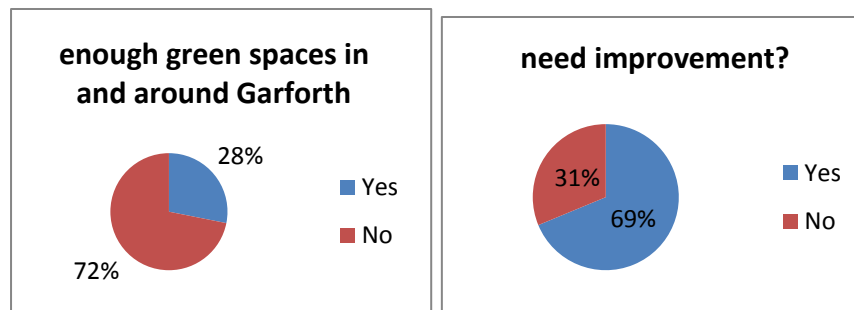
**Map 4**  
 Shows the top 5 sites for industrial development in brown. Site 5 was the only site supported by over 50 percent of the population

## Other Survey Results

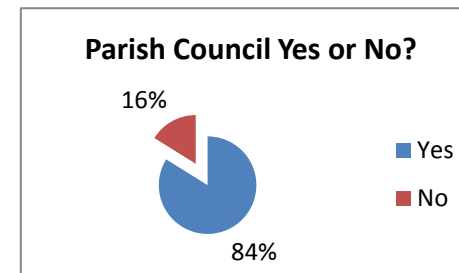
**How many of the 2800 homes do you think Garforth should take?**



**Greenspace in Garforth**



**Parish Council**



Percentages																
	Area 1	Area 2	Area 3	Area 4	Area 5	Area 6	Area 7	Area 8	Area 9	Area 10	Area 11	Area 12	Area 13	Area 14	Area 15	Area 16
Greenbelt	69.1	50.7	59.7	33.3	20.5	42.1	40.0	43.7	0.0	57.1	63.4	65.7	40.3	64.3	50.0	0.0
Recreation	13.2	30.1	4.5	13.9	9.6	13.2	13.3	26.8	60.3	17.1	14.1	10.0	4.5	8.6	30.6	40.0
Industry	2.9	1.4	22.4	45.8	64.4	13.2	4.0	1.4	16.4	2.9	5.6	10.0	43.3	4.3	0.0	32.9
Housing	14.7	17.8	13.4	6.9	5.5	31.6	42.7	28.2	23.3	22.9	16.9	14.3	11.9	22.9	19.4	27.1
Greater than 50%																
Green	82.4	80.8	64.2	47.2	30.1	55.3	53.3	70.4	60.3	74.3	77.5	75.7	44.8	72.9	80.6	40.0
Brown	2.9	1.4	22.4	45.8	64.4	13.2	4.0	1.4	16.4	2.9	5.6	10.0	43.3	4.3	0.0	32.9
Blue	14.7	17.8	13.4	6.9	5.5	31.6	42.7	28.2	23.3	22.9	16.9	14.3	11.9	22.9	19.4	27.1